

# VERTICAL LIFTS *& Lift Systems*



**CUSTOM**  
INDUSTRIAL  
PRODUCTS, INC

*Focusing on Tomorrow's Solutions Today*



# ABOUT Us

*Focusing on Tomorrow's Solutions Today*

**Custom Industrial Products (CIP)** is the most technologically advanced manufacturer of vertical material lifts (VRC's) and lift systems. When you purchase material handling products from us, you are assured of excellence in engineering, manufacturing, and service after the sale. Our commitment is to serve you by providing you with the best solutions. Working side-by-side with customers, we analyze your specific application needs and develop the perfect addition to your environment.

Our lifts are built with safety foremost in mind and to the highest quality standards. All our VRC's meet or exceed national codes for material lifts. Our customer support includes assistance with sales and service, installation supervision, hassle-free shipments as well as technical support. From small lifts to special applications, we have the solution for you.



Every business that has items to move between levels can benefit from a vertical material lift from CIP. If you use manpower or another means to transport materials, consider a lift. It is the safest and most cost effective way to get the most out of your facility. Efficiently utilize space and enhance the organization of your facility. Call us today for a free quote.

1-800-699-2212

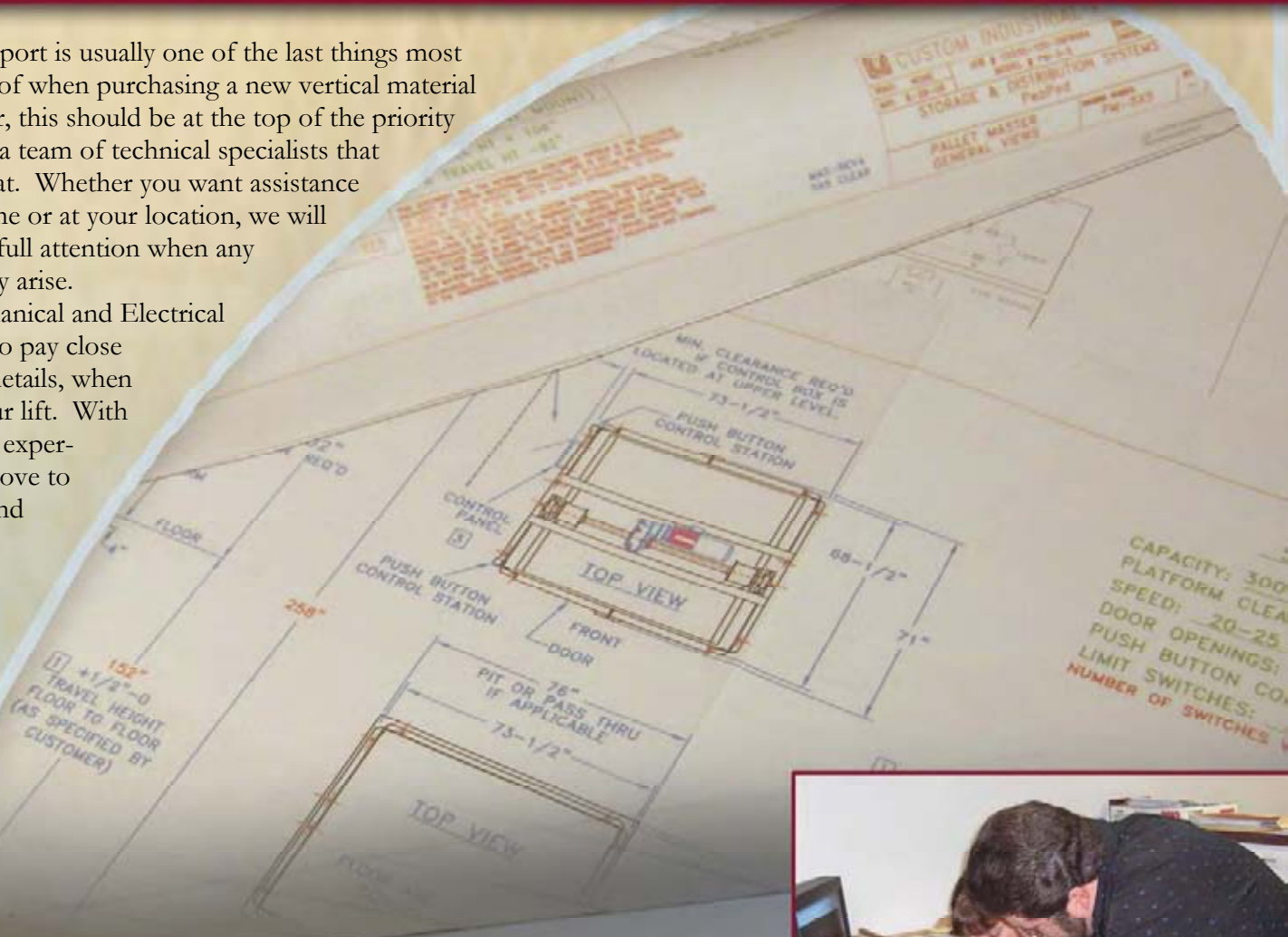
Contact us today for a free quote! [sales@customindprod.com](mailto:sales@customindprod.com) [www.customindprod.com](http://www.customindprod.com)



# TECHNICAL SUPPORT & ENGINEERING

Tech Support is usually one of the last things most people think of when purchasing a new vertical material lift. However, this should be at the top of the priority list. CIP has a team of technical specialists that cannot be beat. Whether you want assistance over the phone or at your location, we will give you our full attention when any questions may arise.

Our mechanical and Electrical Engineers also pay close attention to details, when designing your lift. With their years of experience, they prove to be accurate and precise when determining the correct calculations for each unit.



Custom Industrial Products, Inc. 360 East Drive, Melbourne, FL 32904

1-800-699-2212



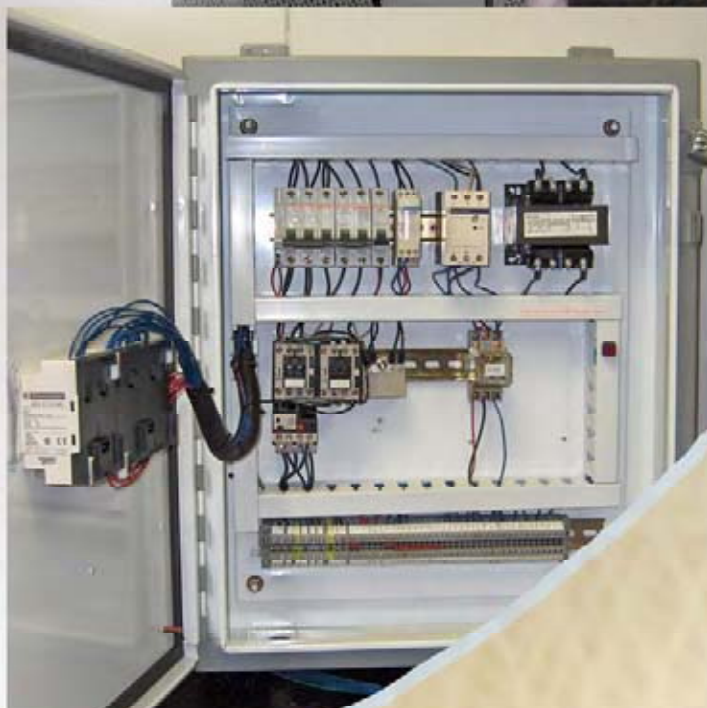
## INNOVATION

Our Electrical Engineers remained steps ahead in technology when they designed the Intelitroll 2600 Digital Display Control Panel. This control panel continually monitors the status of your lift, eliminating any doubt or unnecessary downtime.

Why are digital controls so great? They interact with the operator. The display confirms what you ask the unit to do. If you want to raise your load up to the second level, but the doors are still open, the display tells you to "PLEASE CLOSE THE 1ST LEVEL DOORS". The status messages tell you at a glance where the unit is and if stopped, what the unit needs from you to continue. There is no guess work or trouble shooting needed. Why are we so proud of this new VRC technology? It's simple. We know that performance and downtime are critical factors in today's world. The Intelitroll 2600 addresses both of these issues with the communication of the VRC operation. It is the next generation in intelligent VRC controls.



CIP is proud to offer the Intelitroll 2600 as a standard feature on all our vertical material lifts (VRC's).



### Intelitroll 2600 Digital Display Control Panel:

- LCD Display
- Exclusive to CIP
- No Fuses to Replace
- Standard on All Units
- Easy Message Retrieval
- No More Codes to Translate
- Advanced and User-Friendly
- Meets or Exceeds Latest Standards for UL & NFPA #79

#### Toby Russell / Seams Reasonable:

"Since I acquired my elevator (lift) from CIP, my business has greatly benefited from the ease of moving goods between levels. They were very helpful with the installation and the setup of the unit. I would recommend their product to any business that needs to move goods."



# MANUFACTURING

When you buy a lift, choosing the right manufacturer can be the most important decision. CIP has been manufacturing quality lifts for over twelve years. Since our start, we have built a customer base that includes many Fortune 500 companies by providing the highest quality vertical material lifts at affordable prices. We are dedicated to providing you with a quality VRC (material lift) that will last for years (100% duty cycle). Our professionalism, experience, quality and service are some of the things that set us apart from our competition.



## EXCELLENCE

Etching a trail for others to follow, our manufacturing team has received awards in excellence from governmental agencies and Fortune 500 companies. From the panel shop to assembly, we continue to explore and implement new technologies to enhance and improve efficiency, reliability and durability.

With CIP, you can rest assured in the knowledge that we will continue to uphold the highest standards of safety, quality and craftsmanship as we manufacture your vertical material lift (VRC).





# PALLET MASTER *Vertical Material Lift (VRC)*

## EASY TO INSTALL

The Pallet Master Self-Contained Vertical Material Lift is designed to offer an innovative means of transporting materials between levels. It includes standard features that other units only offer as options. It is the easiest and most cost-effective lift to install. Due to the Pallet Master's unique modular design, it is usually installed in only three sections. This unit also has a prewired option available saving you time, money and manpower.

### **Pallet Master Options Include:**

- Factory Prewire
- Soft Start/Soft Stop Operation
- Loading Ramp
- Operating Speeds
- Multi-Level Operation
- "C" or "Z" Load/Unload Configuration



Don't be fooled by imitations. Buy the original modular VRC from the original manufacturer!

The Pallet Master  
Vertical Material Lift  
by CIP



### **Soft Start/Soft Stop**

is a feature that allows your vertical material lift to gently stop and start, saving possible damage to your fragile material. Why do we install Soft Start/Soft Stop drives on units 4000 lbs. and over? It's simple: we know that mechanical stress is a major problem with all machines. By installing this technology, it greatly increases the life span of the entire unit. This saves you thousands of dollars in repairs, down time, safety mishaps and material damage. This Soft Start /Soft Stop feature is an option that is available on all our vertical material lift units.

1-800-699-2212

Contact us today for a free quote! [sales@customindprod.com](mailto:sales@customindprod.com) [www.customindprod.com](http://www.customindprod.com)



# 2-POST *Vertical Material Lift (VRC)*

## 2-Post Options Include:

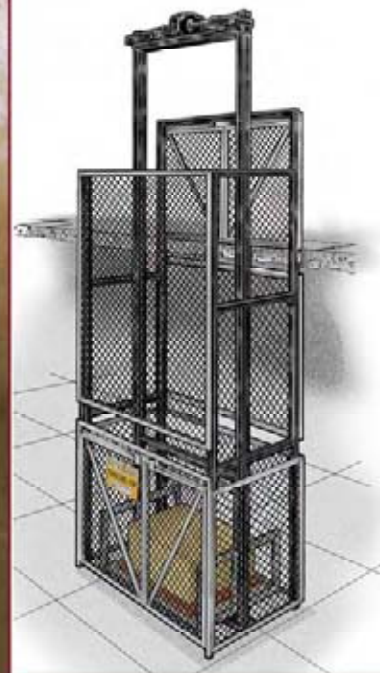
- Split Guide Rails & Knock-Down Platform Carriage
- Gates with Electro-Mechanical Interlocks
- Soft Start/Soft Stop Operation
- Multi-Level Operation
- Outside Applications
- Security Enclosures
- Operating Speeds
- Loading Ramp
- "C" or "Z" Load/Unload Configuration



## VERSATILE

This versatile VRC is popular for a variety of applications. It is perfect for mezzanine, balcony, multi-story applications or just about anywhere vertical material handling is required.

The standard carriage sizes generally range from 4' x 4' to 10' x 8', with load capacities up to 8,000 lbs. Other variations are also available. This material lift is often incorporated in high volume automated systems moving palletized loads.





# 4-POST *Vertical Material Lift (VRC)*

## HEAVY DUTY

Custom Industrial Products' 4-Post Vertical Material Lift allows flexibility for those heavy or bulky loads especially when traffic patterns are critical. The 4-Post efficiently handles heavy loads with virtually unlimited height, weight and platform sizes. This design allows for loading and unloading from the same side ("C" configuration), or from front to rear ("Z" configuration).



### 4-Post & Cantilever Options Include:

- Loading Ramp
- Operating Speeds
- Security Enclosures
- Outside Applications
- Multi-Level Operation
- Soft Start/Soft Stop Operation
- Gates with Electro-Mechanical Interlocks
- "C", "Z" or "90°" Load/Unload Configuration

1-800-699-2212

Contact us today for a free quote! [sales@customindprod.com](mailto:sales@customindprod.com) [www.customindprod.com](http://www.customindprod.com)



# CANTILEVER *Vertical Material Lifts (VRC)*

Utilize storage space while freeing up and organizing your production area with a lift manufactured by CIP.

## OVERCOME OVERHEAD SPACE LIMITS

Our Cantilever Vertical Material Lift is the ideal choice when overhead space is limited. This lift only requires 6'8" of height above the upper level without security enclosures or 7'2" of space with security enclosures. Offered in platform sizes ranging from but not limited to: 4' x 4' to 10' x 8', this lift has a load capacity of up to 6,000 lbs. It can be loaded and unloaded from any of the three open sides.





# DUAL MAST *Vertical Material Lifts (VRC)*

## OVERHEAD SPACE LIMITS AND HEAVY LOADS

The Dual Mast is the next step up from the Cantilever Vertical Material Lift. It is great for height restricted areas and can also handle extra heavy loads comfortably. The Dual Mast efficiently handles heavy loads with virtually unlimited height, weight and platform sizes. It only requires 7'2" of height above the upper level. It can be loaded and unloaded from the front and the rear ("C" or "Z" configuration).



### Dual Mast Options Include:

- Security Enclosures
- Special Environments
- Multi-Level Operation
- Operating Speeds
- Ground Level Loading Ramp
- Gates with Electro-Mechanical Interlocks
- "C" or "Z" Load/Unload Configuration

1-800-699-2212

Contact us today for a free quote! [sales@customindprod.com](mailto:sales@customindprod.com) [www.customindprod.com](http://www.customindprod.com)



# SPECIAL UNITS & APPLICATIONS



We've designed multiple lifts for the self-storage industry. Available as Straddles or Cantilevers, these units include solid platform enclosures and roll-up doors.



**Storage Unit**



**Rhino Coated Pallet Master**



This Pallet Master was "Rhino Coated" to be placed in a "Clean Room" environment.

This "Explosion Proof" Dual Mast was the perfect solution for withstanding life at sea. It was manufactured for placement in the hull of an oil drilling ship and was DNV Certified.

**Salt Spray Application 2-Post Straddle**

This 60 ft. tall lift was designed for use with submarines. It was required to be a solid structure that was lifted and lowered into the dry dock along side the submarine. (Salt Spray and Dry Dock Applications.)



## WHAT'S YOUR APPLICATION?

1. Describe the material being transported: \_\_\_\_\_
2. Describe the method you use now to load the material: \_\_\_\_\_
3. What is the size of the material?: \_\_\_\_\_
4. What is the weight of the material?: \_\_\_\_\_
5. What is the travel height requirement?: \_\_\_\_\_
6. What is the maximum load height requirement?: \_\_\_\_\_
7. What are the number of stops needed?: \_\_\_\_\_
8. What is the load pattern desired: "C", "Z" or "90°" configuration?: C ☐ Z ☐ 90° ☐



9. What power is available at the job site?: 480v/3, 230v/3, 208v/3, etc. \_\_\_\_\_
10. Will the unit need to be pit mounted or surface mounted?: \_\_\_\_\_
11. How often will the unit be used (cycles per day)? \_\_\_\_\_
12. Do you prefer Soft Start/Soft Stop (all units over 4000 lbs. include this)?: \_\_\_\_\_
13. Will the unit need to be used in an automated application?: \_\_\_\_\_
14. Will the lift pass through an existing floor?: \_\_\_\_\_
15. Will the lift be installed inside or outside?: \_\_\_\_\_
16. Will the lift be in a cold environment?: \_\_\_\_\_
17. Will the lift be in a "Clean Room" environment?: \_\_\_\_\_
18. Will the lift be exposed to explosive materials?: \_\_\_\_\_

These questions will help us to determine which lift would best suit your particular application. For a thorough evaluation, additional questions may be addressed.





*Focusing on Tomorrow's Solutions Today*



*From concept through completion, CIP actively employs new and innovative approaches and technologies. We provide you with efficient and reliable solutions in vertical material handling design and implementation. We fulfill these goals in our modern 40,000 square foot manufacturing facility as well as our new 9,100 square foot special products facility.*



**CUSTOM  
INDUSTRIAL  
PRODUCTS, INC**

360 East Drive, Melbourne, FL 32904